

Viera, FL

7380 Murrell Rd. Ste. 100

OFFICE SPACE FOR LEASE



Wickham Commons Office Park, (WCOP), is located in Viera, one of the fastest growing areas in Brevard County.

On the corner of Wickham Road and Murrell Road, at the I-95 exit, WCOP is in close proximity to the Brevard County Government and School Board facilities, the Moore Justice Center Courthouse and The Avenues of Viera.

7380 Murrell Road, Suite 100

SQUARE FEET: 2,794
AVAILABLE: NOW
LEASE RATE: \$ 15.50 PSF Triple Net

321-676-2424 x 14

www.hendersonsoutheast.com



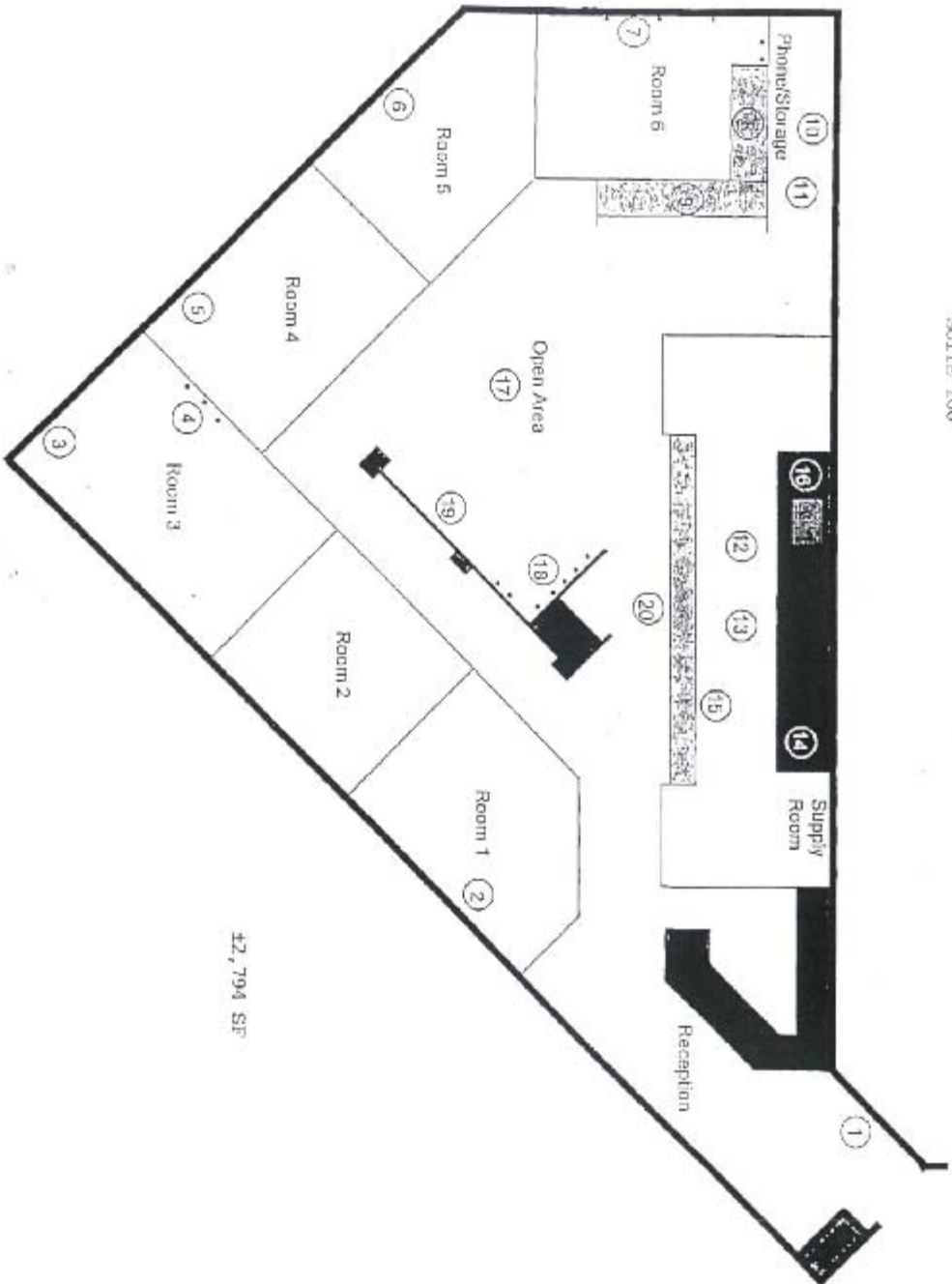
DEVELOPMENT * OWNERSHIP * LEASING
MANAGEMENT * ACQUISITION

HENDERSON SOUTHEAST CORPORATION
A Licensed Real Estate Brokerage
1800 Penn St. Ste. 11, Melbourne, FL 32901
Michael S. Ullian, Vice President, CCIM, SIOR

The information provided is subject to change without notice.
Henderson Southeast Corporation assumes no responsibility for
any errors, omissions or changes.

NICKELUM COMMONS I

SUITE 100



42,794 SF